



Carhartt® Women's Washed Duck Active Jac. CT104053

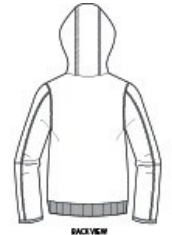


This ladies version is an update to a Carhartt icon—the WJ130. Tough on the outside and warm on the inside, it's also sanded and brushed for softness.

- 12-ounce, firm hand, 100% ring spun cotton duck canvas
- Nylon lining quilted to 80 gram 3M™ Thinsulate™ insulation in body, sleeves and hood
- Attached quilted-flannel-lined three-piece hood with drawcord closure
- Full-length brass front zipper
- Two interior pockets: one zippered, one hook and loop
- Two large hand pockets
- Pen stall in right pocket
- Locker loop
- Elbow pleats for ease of movement
- Rib knit cuffs and waistband
- Carhartt-strong, triple-stitched main seams
- Carhartt label sewn on left pocket



front

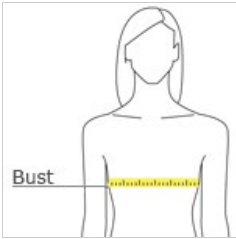


back

CARE INSTRUCTIONS

Machine wash warm like colors, Do not bleach, Tumble dry medium, Steam iron shell only, Do not dry clean

HOW TO MEASURE



BUST

Measure under the arm and around the fullest part of the bust with arms down, keeping tape horizontal.

SIZE CHART

	XS	S	M	L	XL	2XL
Size	2	4/6	8/10	12/14	16/18	20/22
Bust	32-33	34-35	36-37	38 1/2- 40	41 1/2-43 1/2	45 1/2-47 1/2

COLOR INFORMATION



Black
PMS NTR BLACK
C



Carhartt Brown
PMS 426C