



CornerStone® ANSI 107 Class 2 Mesh Tee. CS200



This breathable, moisture-wicking mesh tee delivers high visibility and on-the-job comfort.

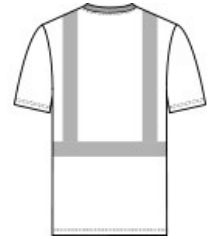
- 4.1-ounce, 100% polyester birdseye mesh
- Durable, reflective 2-inch tape meets ANSI 107 requirements and provides 360-degree visibility on body
- 1x1 rib knit neck
- Back neck tape
- Left chest pocket

CARE INSTRUCTIONS

Machine wash cold. Do not bleach. Tumble dry low. Permanent press. Do not iron. Do not dry clean. Max- 25 washes.

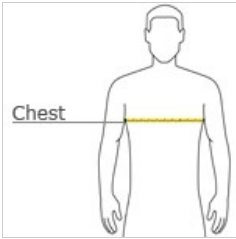


front



back

HOW TO MEASURE



CHEST WIDTH
Measure under the arm and around the fullest part of the chest with arms down, keeping tape horizontal.

SIZE CHART

	S	M	L	XL	2XL	3XL	4XL
Chest	35-37	38-40	41-43	44-46	47-49	50-53	54-57

COLOR INFORMATION



Safety Orange



Safety Yellow