

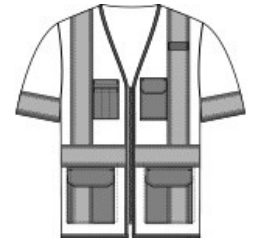


# CornerStone® ANSI 107 Class 3 Surveyor Mesh Zippered Two-Tone Short Sleeve Vest. CSV106



Built for surveyors or anyone who needs the highest ANSI visibility, this breathable, comfortable two-tone vest has short sleeves to meet ANSI 107 Class 3 requirements.

- 100% polyester mesh for breathability
- 100% polyester tricot exterior pockets for durability and easy decoration
- Durable, reflective 2-inch tape meets ANSI 107 requirements and provides 360-degree visibility on body and sleeves
- Two-tone contrast polyester tricot fabric under reflective tape; contrast binding
- Left chest bellows pocket with flap and hook and loop closure
- Two layered right chest pockets: one open, one divided
- Two lower front flap pockets with hook and loop closures
- Interior open lower mesh pockets on both sides
- Mic clip at left chest for easy access
- Molded center front zippered closure
- This garment must be fully zipped to be in compliance with ANSI 107 standards



front

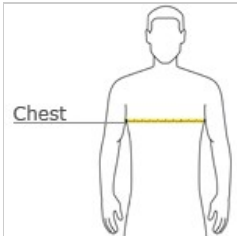


back

### CARE INSTRUCTIONS

Machine wash cold. Do not bleach. Tumble dry low. Permanent press. Do not iron. Do not dry clean. Max- 25 washes.

### HOW TO MEASURE



**CHEST WIDTH**  
Measure under the arm and around the fullest part of the chest with arms down, keeping tape horizontal.

### SIZE CHART

	M	L	XL	2XL	3XL	4XL	5XL
Chest	38-40	41-43	44-46	47-49	50-53	54-57	58-60

### COLOR INFORMATION



Safety Yellow