



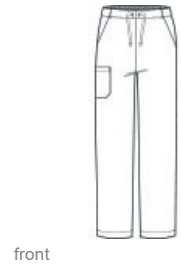
WonderWink® Unisex Tall WorkFlex™ Cargo Pant WW3150T



- 65/35 poly/cotton
- Mechanical stretch
- Flat front full drawstring and half-back elastic waistband
- Front slash pockets
- Right side cargo pocket
- Single back pocket
- Straight leg
- 33-inch inseam
- WonderWink heat transfer logo at cargo pocket
- Classic fit

CARE INSTRUCTIONS

Machine Wash Cold With Like Colors. Gentle Cycle. Use Only Non-Chlorine Bleach When Needed. Tumble Dry Low. Remove Promptly From Dryer. Cool Iron When Needed.

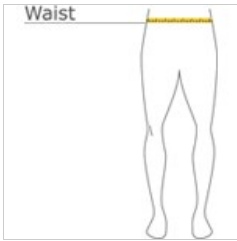


front



back

HOW TO MEASURE



WAIST
Measure around the smallest part of the natural waist.

SIZE CHART

	XST	ST	MT	LT	XLT	2XLT
Waist	24-26	27-29	30-32	33-35	36-39	40-43

COLOR INFORMATION



Black
PMS PROCESS
BLACK C



Ceil Blue



Navy
PMS 654C



Pewter
PMS 432C



Royal
PMS 2145C



Teal Blue



White
PMS WHITE



Wine
PMS 222C