



# WonderWink® Women's Petite WorkFlex™ Cargo Pant WW4550P



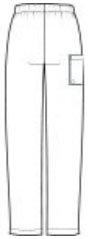
- 65/35 poly/cotton
- Mechanical stretch
- Full drawstring and elastic waistband
- Front slash pockets
- Right side cargo pocket with pen slot
- Straight leg
- 28.5-inch inseam
- WonderWink heat transfer logo at cargo pocket
- Classic fit

### CARE INSTRUCTIONS

Machine Wash Cold With Like Colors. Gentle Cycle. Use Only Non-Chlorine Bleach When Needed. Tumble Dry Low. Remove Promptly From Dryer. Cool Iron When Needed.

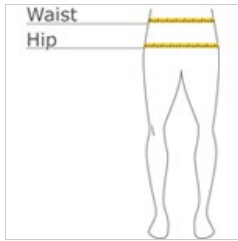


front



back

### HOW TO MEASURE



#### WAIST

Measure around the smallest part of the natural waist.

#### HIPS

With feet together, measure around the fullest part of hips, keep tape horizontal.

### SIZE CHART

	2XSP	XSP	SP	MP	LP	XLP	2XLP
Waist	23-24	25-26	27-28	29-31	32-35	36-39	40-43
Hip	33-34	35-36	37-38	39-41	42-45	46-49	50-53

### COLOR INFORMATION



Black  
PMS PROCESS  
BLACK C



Ceil Blue



Navy  
PMS 654C



Pewter  
PMS 432C



Royal  
PMS 2145C



Teal Blue



White  
PMS WHITE



Wine  
PMS 222C