



WonderWink® Men's Premiere Flex™ Cargo Pant WW5058

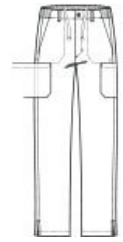


- 78/20/2 poly/rayon/spandex
- Flat front waistband with belt loops
- Full drawstring waist with elastic back
- Button opening with zipper fly
- Front slash pockets
- Cargo pockets with interior pocket
- Single back pocket
- Straight leg
- Side vents
- WonderWink heat transfer logo at front left pocket
- Modern fit
- 31-inch inseam

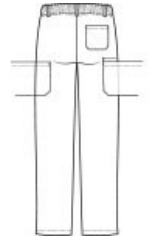
**

CARE INSTRUCTIONS

Machine Wash Cold With Like Colors. Gentle Cycle. Use Only Non-Chlorine Bleach When Needed. Tumble Dry Low. Remove Promptly From Dryer. Cool Iron When Needed.

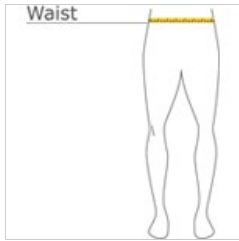


front



back

HOW TO MEASURE



WAIST
Measure around the smallest part of the natural waist.

SIZE CHART

	XS	S	M	L	XL	2XL	3XL	4XL	5XL
Waist	24-26	27-29	30-32	33-35	36-39	40-43	44-47	48-51	52-55

COLOR INFORMATION



Black
PMS PROCESS
BLACK C



Ceil Blue



Navy
PMS 654C



Pewter
PMS 432C



Royal
PMS 2145C



Teal Blue



White
PMS WHITE



Wine
PMS 222C